

HOW TO PLAY



Lotto Strike™ is an add-on game that can only be played with Lotto. The object of the game is to correctly select the first four Lotto numbers in the exact order drawn in each Lotto draw.

1 How to win Lotto Strike™

Lotto Strike is won by selecting four numbers that correctly match the exact order of the first four Lotto balls drawn. If you match the four balls correctly, you can *Strike It Rich* with a minimum prize of \$100,000 – and more when there is a Lotto Strike jackpot!

And if you match just one, two or three of the first four Lotto balls, in exactly the same order drawn, you'll also be a winner.

2 Winning numbers

There are four prize divisions as follows:

- Strike Four** match the first four Lotto numbers in the exact order drawn
- Strike Three** match any three of the first four Lotto numbers in the exact order drawn
- Strike Two** match any two of the first four Lotto numbers in the exact order drawn
- Strike One** match any one of the first four Lotto numbers in the exact order drawn to win one free Lotto Strike Autopick entry into a future draw.

The odds of winning are:

Division	What you need in a single game panel	Odds based on 1 game
1	First 4 Lotto numbers in exact order drawn	3,575,880:1
2	Any 3 of the first 4 Lotto numbers in exact order drawn	21,804:1
3	Any 2 of the first 4 Lotto numbers in exact order drawn	346:1
4	Any 1 of the first 4 Lotto numbers in exact order drawn	12:1

3 Jackpots

If no one picks all four winning numbers in the draw, the Strike Four prize pool will jackpot to the next draw. For example, if there is no winner on Monday night, the prize pool jackpots to the Wednesday night draw, then the Saturday night draw and so on.

The jackpot prize grows until it reaches \$2 million, when it is capped until it is won.

Boxed Entry

A Boxed Selection gives you 24 combinations of your four numbers and means that your four numbers can be drawn in any order within the first four Lotto balls. Boxing your numbers is equivalent to 24 Standard games.

Not only does a Boxed Entry improve your chances of winning, but a winning Boxed Entry actually wins multiple prizes. For example, if you have only three correct winning numbers you actually win 13 prizes, being: One Strike three prize, three Strike two prizes and nine Strike one prizes.

Winning Numbers	Strike 4	Strike 3	Strike 2	Strike 1
4 numbers matched	1	0	6	8
3 numbers matched	0	1	3	9
2 numbers matched	0	0	2	8
1 number matched	0	0	0	6

(Continued over)



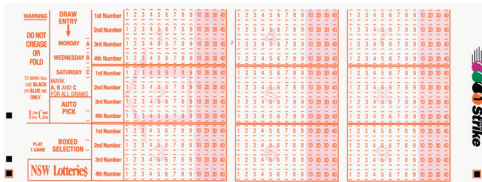
HOW TO PLAY



How to play

To play Lotto Strike, you can choose your own numbers by filling in a Lotto Strike entry form, or play an Autopick entry.

Using the Lotto Strike™ entry form **Choosing an Autopick entry**



Another way to enter Lotto Strike is by playing an Autopick entry – where the computer randomly selects your numbers for you.

When filling out your Lotto entry, you can mark the Lotto Strike 'Autopick' box on the Lotto entry form. You will receive a one panel Autopick entry into the Lotto draws you have selected.

If you don't want to fill out a form, just ask your agent for a Lotto Strike Autopick entry when you play Lotto – it's that easy.

Use black or blue ink. Do not use red ink.

1. Each entry form contains nine game panels, costing \$1.00 per Standard game (plus agent's commission).
2. In each game panel, select one number per line between one and 45 inclusive. For example, if you choose number 38, just mark 30 and eight. If you choose five, mark five only. If you choose number 20, mark 20 only and if you choose number 14, mark 10 and four. Like this:

38	1st Number	1 2 3 4 5 6 7 9 10 20 30 40
5	2nd Number	1 2 3 4 6 7 8 9 10 20 30 40
20	3rd Number	1 2 3 4 5 6 7 8 9 10 20 30 40
14	4th Number	1 2 3 5 6 7 8 9 10 20 30 40

3. The number on the first line will be your first ball, the number on the second line will be your second ball and so on.
4. Select the draw/s you wish to enter by marking the letters A (Monday) and/or B (Wednesday) and/or C (Saturday) where indicated on the entry form. To play all three draws mark A, B and C.
5. Mark 'Autopick' if you want your numbers chosen randomly by the computer.
6. If you want your four numbers boxed, mark 'Boxed Selection'. This is equivalent to 24 standard games, costing \$24.00 (plus agent's commission). Only one panel on each entry form may be completed.
7. Hand your Lotto Strike entry form in at any NSW Lotteries agency with a computer linked terminal.
8. You will receive a bet receipt ticket with your numbers on it. Please check your numbers carefully.

Standard Entry Costs (Includes agent's commission)

Number of Panels	(1 Draw) Mon, Wed or Sat only	(2 Draws) *Any combination in any order	(3 Draws) *Mon, Wed and Sat in any order
1	\$1.20	\$2.40	\$3.60
2	\$2.20	\$4.40	\$6.60
3	\$3.20	\$6.40	\$9.60
4	\$4.25	\$8.50	\$12.75
5	\$5.30	\$10.60	\$15.90
6	\$6.35	\$12.70	\$19.05
7	\$7.40	\$14.80	\$22.20
8	\$8.45	\$16.90	\$25.35
9	\$9.50	\$19.00	\$28.50

Boxed Entry Costs – Lotto Strike™ (includes agent's commission)

Number of Panels	(1 Draw) Mon, Wed or Sat only	(2 Draws) *Any combination in any order	(3 Draws) *Mon, Wed and Sat in any order
1	\$25.20	\$50.40	\$75.60